

27.01.2017

KH3 TRASH

HADDOCK HASH A BRIDGE TOO FAR

With our normal driver being away Amaized and Elvis had to drive themselves to the hash. Unfortunately neither of them planned the route. Elvis was convinced that Fingle Bridge was in fact Steps Bridge and accordingly drove into an empty car park. Realising that something was wrong, he made for Dunsford and proceeded along the road until there appeared a sign pointing to Fingle Bridge. Little did he know that this was, in fact, a footpath sign and not suitable for cars. It took us to Clifford Bridge. Finally we retraced our steps (bridge) and finally arrived at Fingle Bridge to be warmly greeted by our Hare who kindly pointed out where the hash was but suggested that we wait for them.

It was a beautiful clear night and the stars were twinkling above the trees as the Kirton hashers made their way down from Hunters path to the Teign. Dents was the first to arrive at Fingle Bridge, which was unusual in itself. Amaized and Elvis joined the hash and as is usual in a 'Haddock Hash' we found ourselves looking for dots with Haddock insisting that he had laid a trail. The trail, if there was one, went up and up and up and up.

2 one footed hashers meet



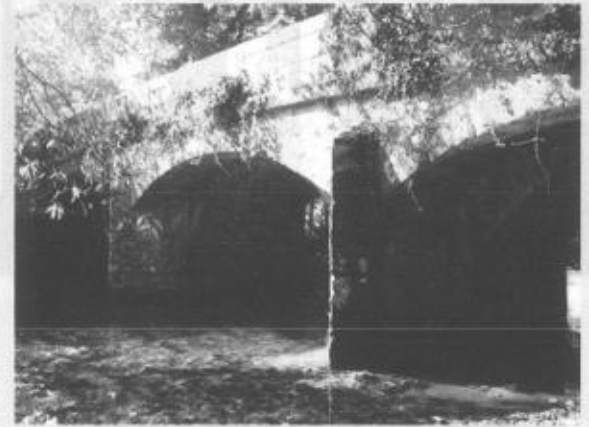
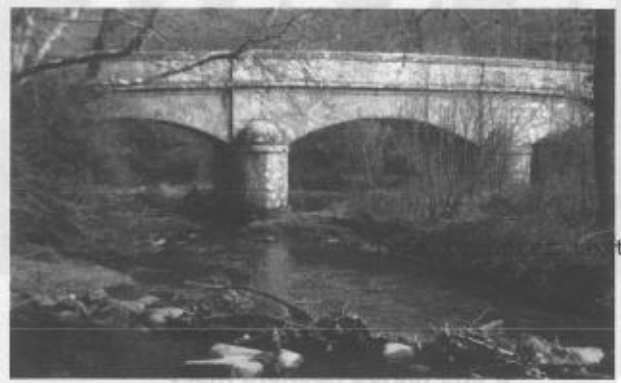
For future reference this is where Fingle Bridge is!!!!

The sweetie stop had been specifically chosen in order for Scoubi to identify 3 rather large pine trees. Unfortunately Scoubi was away but several hashers ventured suggestions which were ignored by the hare.

After the sweetie stop we went up and up and up again and soon we found ourselves plunging downwards with sleet and snow swirling about our loins.

After a wet, cold and tiring Haddock hash we were back at the cars having had a right good time.

Can you name these bridges?



Anagrams of the bridges

gets bed rips

coffer bird gild

glib freed gin

dexter ridge lobe

Hashers Backwards IQ test

Answer: Melancholy.

Question: What kind of salad can you make from a cantaloupe and Lassie?

Answer: Put your left leg in and shake it all about about.

Question: What's the worst known way of cleaning your toilet?

Answer: Hey diddle diddle.

Question: How do you greet your diddle diddle early in the morning?